
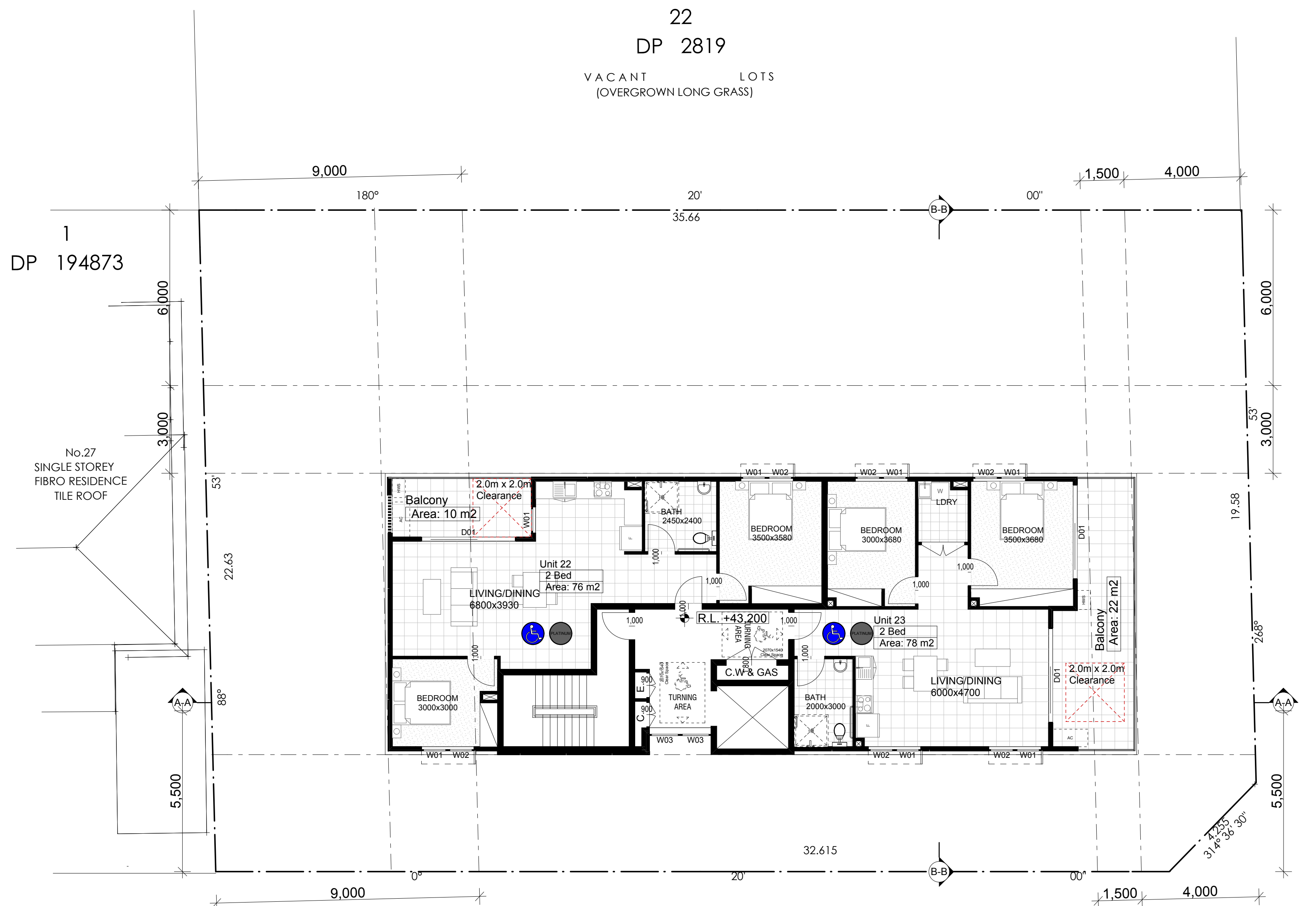


NOTES

[illegible]

	
Eliminated Architect Sean Witten NSW Architects Registration Board 534 (draft) (sean.witten@draft.com.au) PC Ref: 427 Uverylands NSW 21	
Project: Demolition & construction of a eight (8) storey Residential development containing 23 units under ARHSEPP	
Client: Hume Community Housing Council Liverpool City Council	
Drawing title: Level 7 Plan	
Designed + drawn: M. Trinh & P. Revollar	
Issue/Stage: A - ISSUE A	
Paper/Scale: A2/1:100	
Date: 10/12/2020	
Job No: 28705	dwg No: 1009



Level 7
scale 1:100

Potential for Fully Accessible



LHG - Silver level



LHG - Platinum level

LEVEL 7

Area: 170 m2